



CONTRASTS AND CONTRADICTIONS

When you NOTICE that a character says or does something that's the opposite (CONTRADICTS) what they have been doing...

NOTE it (**CC**) and ASK yourself:

Why is the character doing that?

The answers may help you make a PREDICTION about what will happen next...

Or help you make an INFERENCE about the PLOT or the CONFLICT of the story.



AHA MOMENT

When you NOTICE that a character suddenly REALIZES, UNDERSTANDS, or finally FIGURES SOMETHING OUT...

NOTE it (!!) and ASK yourself:

How might this change things?

If the character figured out a PROBLEM, you probably just figured out the CONFLICT.

If the character understood a LIFE LESSON, you probably just learned the THEME.



TOUGH QUESTIONS

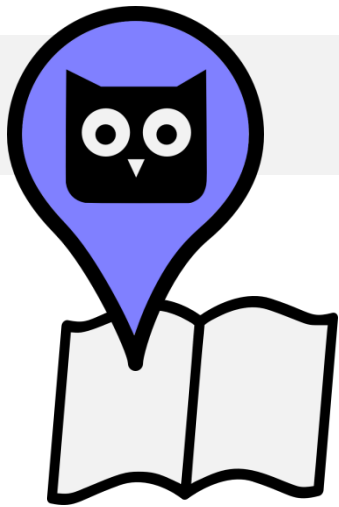
When you NOTICE that the character asks himself a really difficult QUESTION...

NOTE it (??) and ASK yourself:

What does this question make me wonder about?

The answers may tell you about the CONFLICT of the story...

Or they might FORESHADOW what will happen later in the story.



WORDS OF THE WISER

When you NOTICE a character (probably older and wiser) take the main character aside and give serious ADVICE...

NOTE it (**WW**) and ASK yourself:

What's the life lesson, and how might it affect the character?

Whatever the lesson is, you've probably found a **THEME** of the story.



AGAIN AND AGAIN

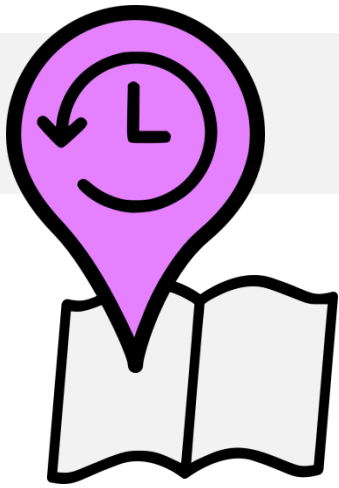
When you NOTICE a WORD, PHRASE, OBJECT, or SITUATION mentioned over and over...

NOTE it (AA) and ASK yourself:

Why does this keep showing up?

The answers may tell you about the THEME and CONFLICT of the story...

Or they might FORESHADOW what will happen later in the story.



MEMORY MOMENT

When you NOTICE that the author interrupts the action to tell you a MEMORY...

NOTE it (**MM**) and ASK yourself:

Why might this memory be important?

The answers may tell you about the **THEME** and **CONFLICT** of the story...

Or they might **FORESHADOW** what will happen later in the story.